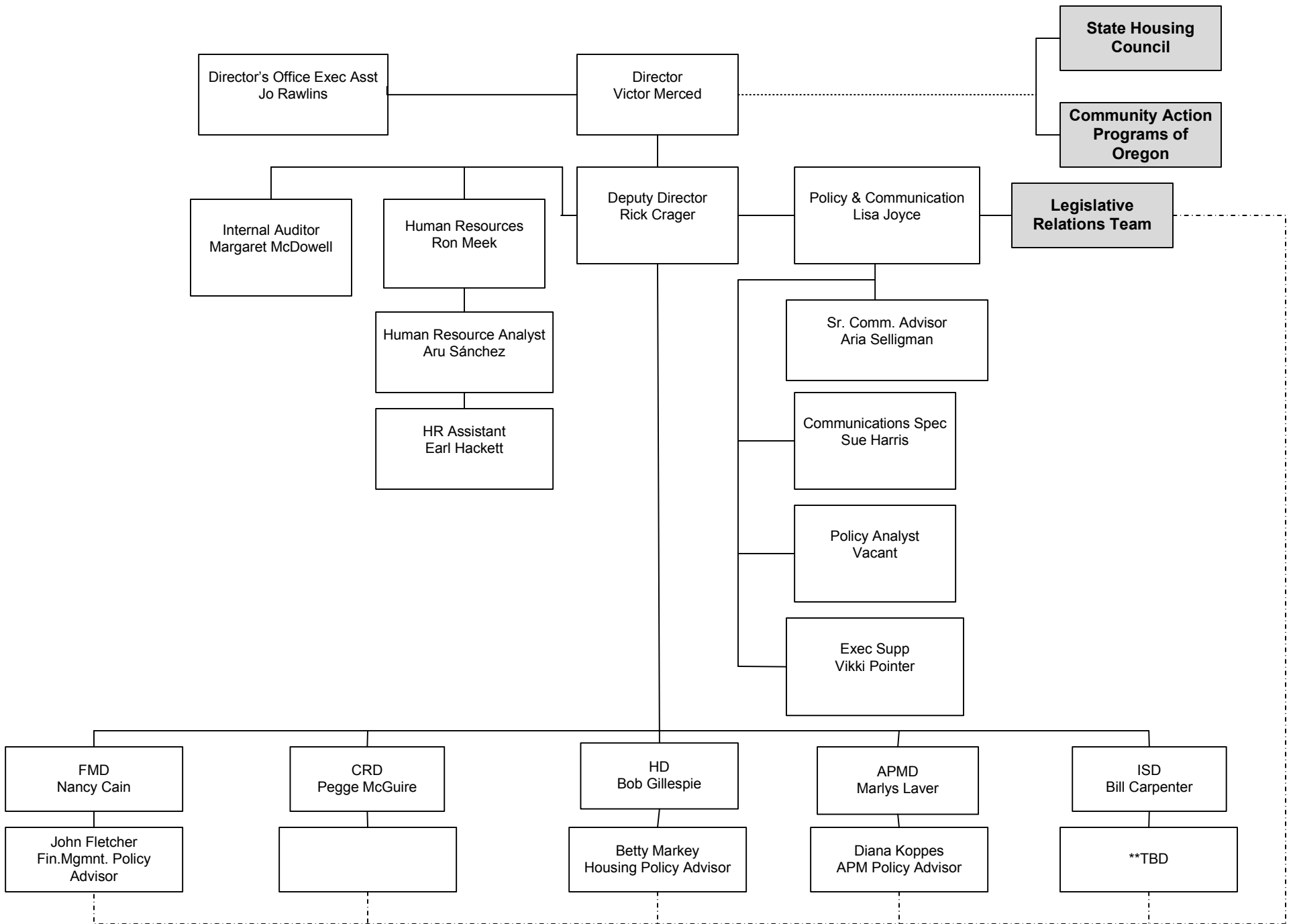
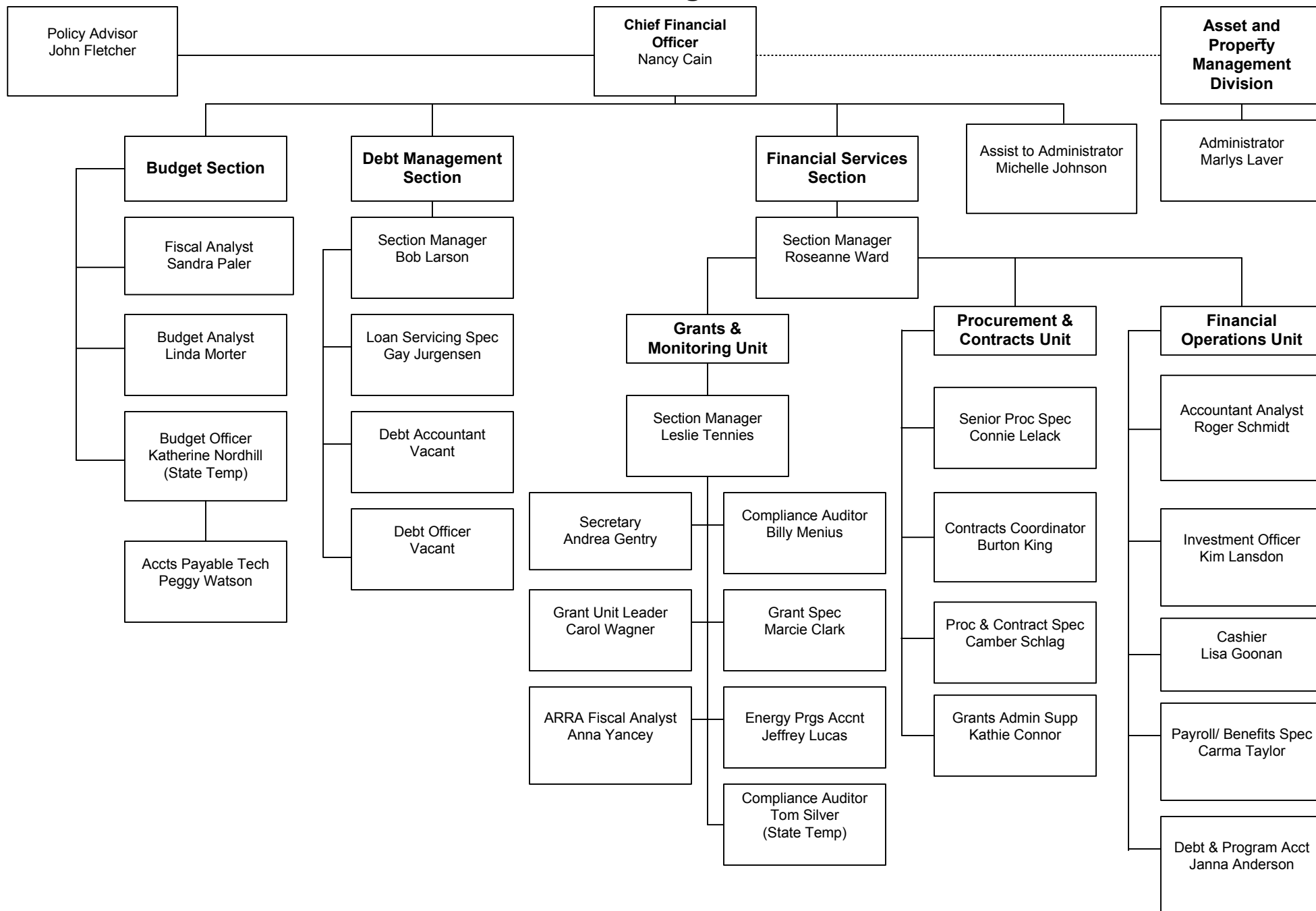


# Oregon Housing and Community Services (91400) Director's Office



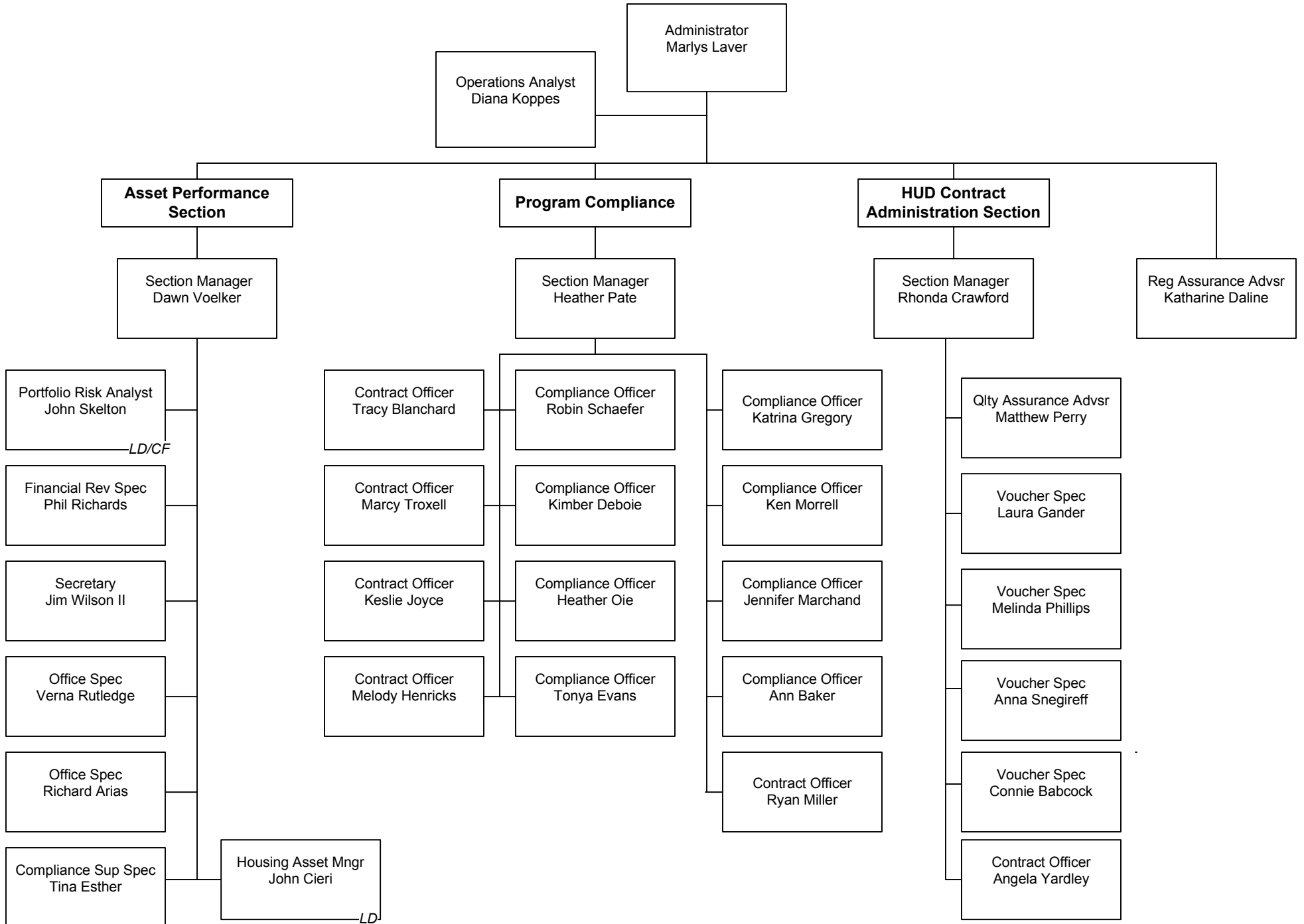
# Oregon Housing and Community Services Financial Management Division

5/24/2010



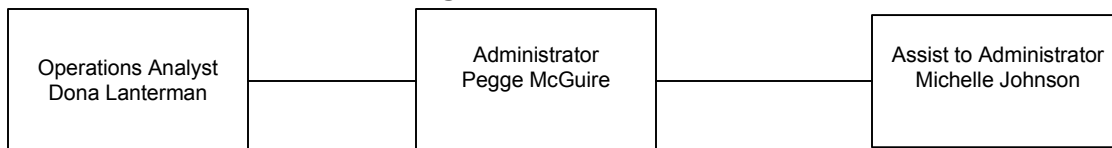
# Oregon Housing and Community Services Asset and Property Management Division

5/24/2010



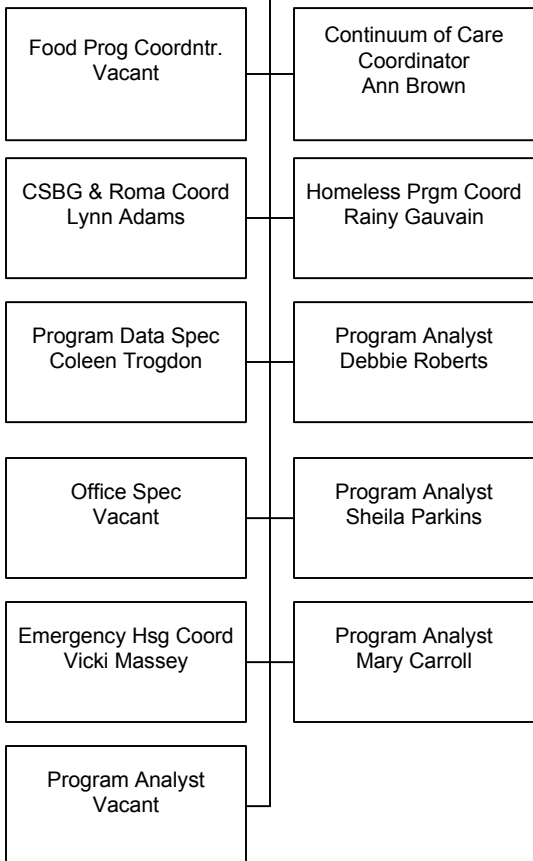
# Oregon Housing and Community Services Community Resources Division

5/24/2010



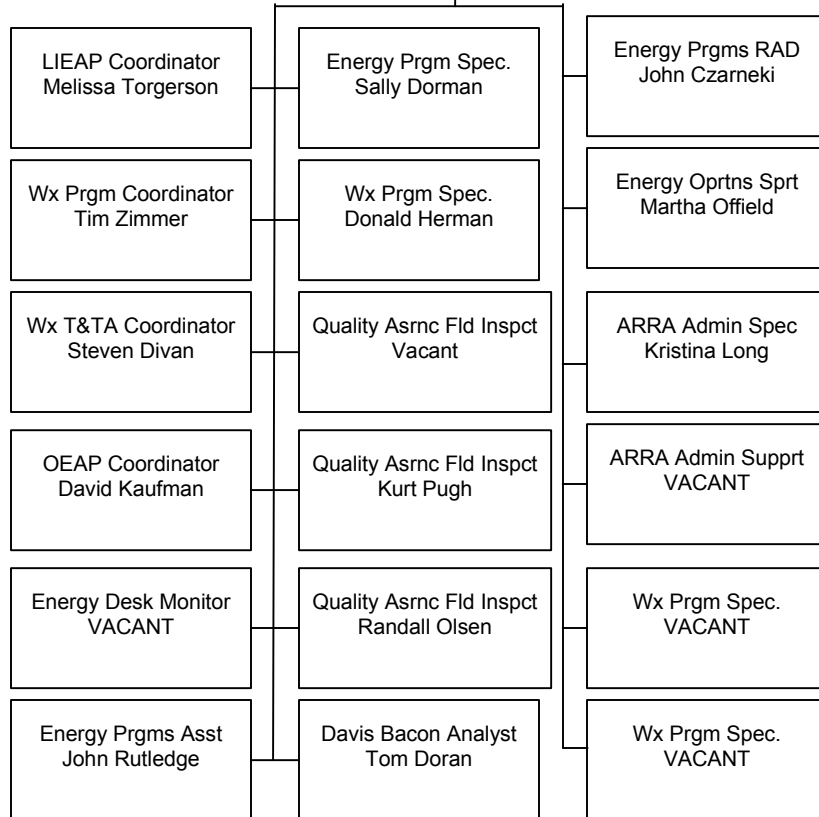
## Community Services Section

Section Manager  
Alan Kramer



## Energy Unit

Section Manager  
Richard Mathews

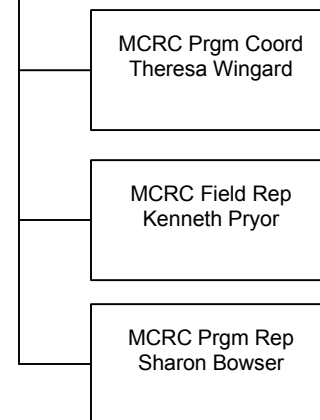


## Oregon Volunteers

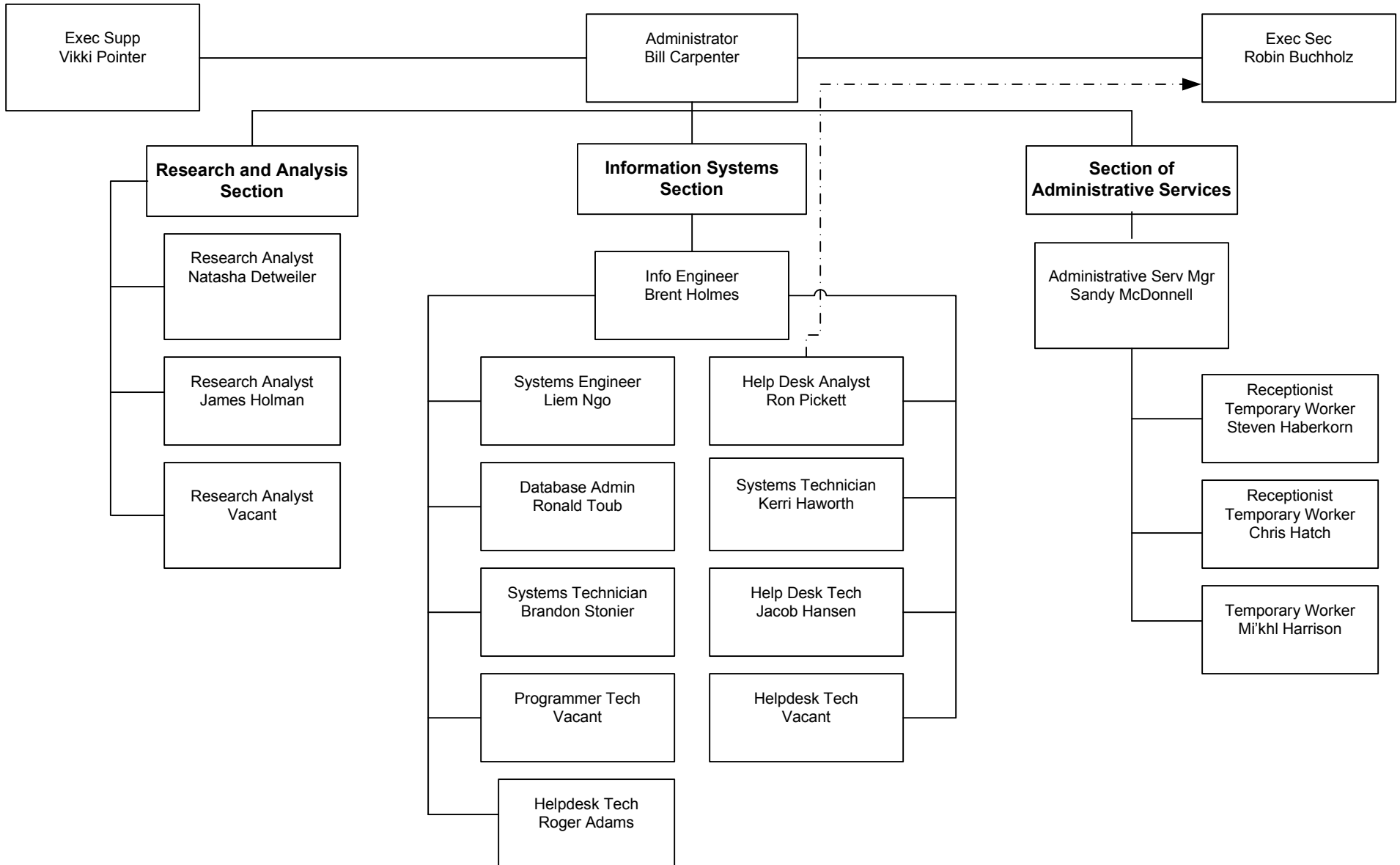
Executive Director  
Kathleen Joy

Volunteer Prgm Coord  
Vacant

## Manufactured Communities Resource Center



# Oregon Housing and Community Services Information Services Division



# Oregon Housing and Community Services - Housing Division

5/24/2010

